

THE

Inauguration

OF

Andrea E. Chapdelaine
12th President of Connecticut College

Saturday, April 26, 2025
11:00 a.m.



Athey Center for Performance and Research
at Palmer Auditorium

Andrea E. Chapdelaine, Ph.D.



ANDREA E. CHAPDELAINE became Connecticut College's 12th president on July 1, 2024, following a unanimous appointment by the Board of Trustees. With more than 30 years of experience in higher education, she is a strategic and inclusive leader committed to academic excellence, student-centeredness and community-building in service to the College's mission. She is a passionate advocate for providing a personalized, purposeful and integrative education that shapes confident global citizens of character, intellect and action. Since arriving on campus, Chapdelaine has focused on meaningful engagement with the entire Connecticut College community, transparent communication, and strengthening shared governance in order to develop a unified vision that

will ensure continued excellence and long-term institutional strength and sustainability.

Chapdelaine previously served as president of Hood College, where she led two strategic planning initiatives, expanded academic programs, increased enrollment and retention, and oversaw exponential growth in the College's endowment. In recognition of her contributions to Hood, a scholarship for first-generation students was established in her honor. In 2019, Chapdelaine was named one of *The Daily Record's* 2019 Top 100 Women in Maryland and was appointed to the Governor's Workforce Development Board, in recognition of her work building partnerships to provide experiential learning opportunities for students and to benefit the public good.

Chapdelaine's deep belief in the critical role of independent colleges and the liberal arts is reflected in her national leadership. She serves on the boards of the American Association of Colleges and Universities and the Council of Independent Colleges, and previously served on the board of the National Association of Independent Colleges and Universities. She currently serves as a member of a national task force focused on developing strategies to ensure the long-term financial sustainability of private higher education.

A proud first-generation college graduate, Chapdelaine holds a bachelor's degree in psychology and justice studies from the University of New Hampshire and master's and doctoral degrees in social psychology from the University of Connecticut. She has served five private liberal arts colleges, beginning as a faculty member at Wabash College in Crawfordsville, Indiana; Trinity College in Hartford, Connecticut; and Albright College in Reading, Pennsylvania. She also served as dean of undergraduate studies and provost at Albright. Her scholarly work has focused on faculty support, the role of undergraduate research in student learning, ethical issues in community-based learning, and procedural justice.



Academic Procession

BAGPIPER

Ephraim Dean, Manchester Pipe Band

COLLEGE MARSHAL

Marc R. Forster, *Henry B. Plant Professor of History*

COLOR GUARD

United States Flag, carried by Petty Officer First Class Ryan Colsher,
United States Coast Guard Academy

Connecticut State Flag, carried by Petty Officer First Class Simeon Ramos,
United States Coast Guard Academy

DELEGATE MARSHAL

David Dorfman '81, *Professor of Dance*

STUDENT GOVERNMENT ASSOCIATION

STAFF COUNCIL

ALUMNI ASSOCIATION BOARD OF DIRECTORS

DELEGATES

FACULTY MARSHAL

Tristan Anne Borer, *Professor of Government and International Relations*

FACULTY

EMERITI FACULTY

SENIOR ADMINISTRATORS

TRUSTEE AND PLATFORM PARTY MARSHAL

Audrey L. Zakriski, *Professor of Psychology*

TRUSTEES OF THE COLLEGE

EMERITI TRUSTEES

PAST PRESIDENTS

CHAPLAIN

The Reverend Stephanie Haskins, *College Chaplain and Director of Religious and Spiritual Programs*

GREETERS

The Honorable Martha Marx, *Connecticut State Senator*

The Honorable Michael E. Passero '79 M'89, *Mayor of the City of New London*

Lynn Pasquerella, *President of the American Association of Colleges and Universities*

Ariella R. Rotramel, *Chair of the Faculty Steering and Conference Committee and Vandana Shiva Associate Professor of Gender, Sexuality and Intersectionality Studies*

Lynne Crider, *Chair of Staff Council and Associate Director of Annual Giving*

Bella Castellanos Palacios '25, *President of the Student Government Association*

Isaac H. Clothier V '79 P'10, *President of the Alumni Association Board of Directors*

ADDITIONAL SPEAKERS

Erika J. Smith, *Dean of the College and Vice President for Retention and Success*

R. Danielle Egan, *Dean of the Faculty and Fuller-Maathai Professor of Gender, Sexuality and Intersectionality Studies*

Julia Pelczarski '28, *Inaugural Poet*

CHAIR OF THE BOARD OF TRUSTEES

Seth W. Alvord '93

PRESIDENT

Andrea E. Chapdelaine



Inauguration Program

PROCESSION

Selected Marches
Manchester Pipe Band

WELCOME

Marc R. Forster, *College Marshal*
Henry B. Plant Professor of History

CALL TO COMMUNITY AND LAND ACKNOWLEDGMENT

Erika J. Smith, *Dean of the College and Vice President for Retention and Success*

MUSICAL SELECTION

“Seasons of Love” by Jonathan Larson
Connecticut College Singers
Tyler Davis ’26, *bass*
Samuel Oram, *keyboard*
Matt Richards, *drums*

INTRODUCTION OF SPEAKERS

R. Danielle Egan, *Dean of the Faculty and Fuller-Maathai Professor of Gender, Sexuality and Intersectionality Studies*

GREETINGS

The Honorable Martha Marx, *Connecticut State Senator*

The Honorable Michael E. Passero ’79 M’89
Mayor of the City of New London

Lynn Pasquerella
President of the American Association of Colleges and Universities

Seth W. Alvord ’93
Chair of the Board of Trustees

Ariella R. Rotramel
*Chair of the Faculty Steering and Conference Committee and Vandana Shiva
Associate Professor of Gender, Sexuality and Intersectionality Studies*

Lynne Crider
Chair of Staff Council and Associate Director of Annual Giving

Bella Castellanos Palacios '25
President of the Student Government Association

Isaac H. Clothier V '79 P'10
President of the Alumni Association Board of Directors

Daniel David Tetreault
Son of President Andrea E. Chapdelaine

INAUGURAL POEM

"The Promise of Growth"
Julia Pelczarski '28

INSTALLATION OF THE PRESIDENT

Seth W. Alvord '93 and Andrea E. Chapdelaine

INAUGURAL ADDRESS

"Embracing the Hill: People, Purpose and Place"
Andrea E. Chapdelaine

ALMA MATER

"Alma Mater by the Sea"
Katherine Caviness '25, Samantha Lamontagne '25, Jilly Pearson '25 and Megan Spindler '25
Constitution Brass Quintet

CLOSING REFLECTION

The Reverend Stephanie Haskins
College Chaplain and Director of Religious and Spiritual Programs

RECESSIONAL

"Belgian March" by Scotson Clark
Constitution Brass Quintet

Sign Language Interpretation by Joy Valenti



*A picnic lunch celebrating the Inauguration will take place on Tempel Green
following the ceremony.*

Inaugural and Presidential Traditions

ALMA MATER

“Alma Mater by the Sea” was written in the spring of 1920 by two Connecticut College students, Olive Littlehales Corbin ’21 (lyrics) and Edith C. Smith ’20 (music). Their composition prevailed over other original student works in a contest to find a College song. Additional stanzas were added in the late 1980s by Jeffrey G. Barnhart ’89 MAT ’92 and Claire L. Gaudiani ’66.

COLLEGE CHARTER

The State Legislature chartered Connecticut College on April 5, 1911. The charter establishes the College as a legal entity, provides the authority to confer degrees and creates a board of trustees to govern the institution. The chair of the board presents the incoming president with a copy of the charter during the installation ceremony as a sign of the trust and responsibility the College places in its new leader.

COLLEGE MACE

Connecticut College’s mace is carried by the College marshal on official occasions. It was a gift to the College from The Century Council when Claire L. Gaudiani ’66 began her presidency in 1988. Designed and fabricated by Richard Scheller ’73, it contains brass sleeves engraved with the names of all the former College presidents.

COLLEGE MOTTO

The motto, *Tanquam lignum quod plantatum est secus decursus aquarum*, translates into “Like a tree planted by the rivers of water (that bringeth forth its fruit in its season).” The motto is a Vulgate version of a phrase from the First Psalm. Connecticut College’s translation comes from the King James version of the Bible.

COLLEGE SEAL

The seal comprises several elements, including two open books, a tree on a background of water and the College’s motto. The current seal is based on a design created by the College’s first president, Frederick H. Sykes (1913-1917).

GREETINGS AND DELEGATES

Colleges invite representatives of various organizations, groups and government entities to bring greetings or express good wishes during the Inauguration. Other educational institutions and societies are also invited to send delegates to take part in the Inaugural procession. Many institutions, even if not represented by a delegate, send written greetings. A selection of the greetings received by Connecticut College on the occasion of the president’s Inauguration will be displayed in the lobby of the Athey Center at Palmer Auditorium.

INSTALLATION CEREMONY

The wording of Andrea E. Chapdelaine’s installation ceremony is adapted from traditional language used for the installation of several Connecticut College presidents, including Katharine Blunt (1929), Dorothy Schaffter (1943), Rosemary Park (1947), Leo I. Higdon, Jr. (2006) and Katherine Bergeron (2014).

PRESIDENTIAL MEDALLION

The Presidential Medallion, which features the Connecticut College seal, is worn on ceremonial occasions as part of the president’s regalia. It was created for the Inauguration of Leo I. Higdon, Jr., and was a gift to the College from Trustee Emeritus Linda J. Lear ’62. The chair of the Board of Trustees presents the incoming president with the medallion as a symbol of the authority entrusted to the new leader.

Connecticut College Alma Mater by the Sea

Connecticut College by the sea
Your men and women together praise thee
Arboretum, Fanning, and Harkness
There we grew, there we knew
Work, sharing, and joy.

Alma Mater by the sea
Our hearts in love are lifted to thee
We'll carry your standard forever
Loyalty to CC
Faith, friendship, and love.

Hail to our college, white and blue
Keep through the years our love deep and true
Our Alma Mater we love thee
Ivied walls
CC calls to loyalty true.

Connecticut College liberal arts
You shaped our knowledge, our wisdom, our hearts
Our honor code we will carry
To the world where we'll build
Trust, justice, and peace.

Stanzas 1 and 4 — Jeffrey G. Barnhart '89, MAT '92 and Claire L. Gaudiani '66

Stanzas 2 and 3 — Olive Littlehales Corbin, Class of 1921

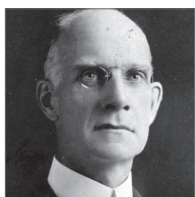
Music — Edith C. Smith, Class of 1920



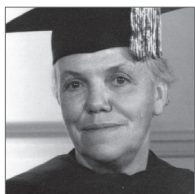
Past Presidents



FREDERICK H. SYKES, 1913-1917. More than anyone else, Frederick Sykes embodied the spirit of the College's early years. He was a tireless crusader on its behalf. During his tenure, the College established an academic program intended to provide "preparation for life by purposeful living and doing," began building its endowment, hired an architect to oversee the layout of the campus, brought on board the first members of the faculty and staff, and enrolled the first students.



BENJAMIN T. MARSHALL, 1917-1928. Benjamin Marshall raised the College's sights by suggesting that it had an opportunity and an obligation to provide the world with educated people of "character, understanding, power and vision. The College's reputation continued to grow.



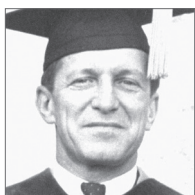
KATHARINE BLUNT, 1929-1943, 1945-1946. The energetic Katharine Blunt oversaw the creation of a modern-day college. Twelve new buildings were opened (including Palmer Auditorium and Harkness Chapel), the first capital campaign met with great success and the Arboretum was established. She also saw the College through the Hurricane of 1938. It was her good fortune that the College had just paid the first premium for new wind damage insurance.



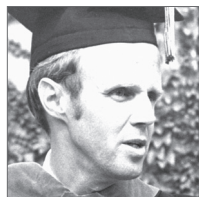
DOROTHY SCHAFFTER, 1943-1945. Dorothy Schaffter improved the organization of the College's governance by formalizing the institution's rules and procedures and by establishing more efficient budget and accounting systems.



ROSEMARY PARK, 1947-1962. Rosemary Park's tenure was highlighted by a major revision of the curriculum, completion of an ambitious capital campaign marking the College's 50th anniversary and continued construction of campus facilities—including Harris Refectory and the six Plex residence halls. She was a gifted administrator with a wry sense of humor and a passion for current events and educational theory.



CHARLES E. SHAIN, 1962-1974. The College changed dramatically under the leadership of Charles Shain with the adoption of coeducation in 1969. He advocated developing students' "moral imagination" as well as their intellectual strengths. He also brought a prescient appreciation for the value of a global perspective.



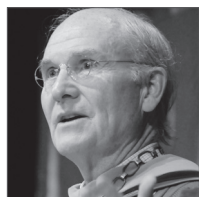
OAKES AMES, 1974-1988. Oakes Ames broadened and balanced the definition of a Connecticut College education. During his tenure the College built the Charles E. Shain Library and new athletic facilities, renovated New London Hall and science laboratories, and converted Palmer Library to the Blaustein Humanities Center. Ames also renewed the College's commitment to volunteer service.



CLAIRE L. GAUDIANI '66, 1988-2001. Claire Gaudiani raised the College's profile nationally and increased admission selectivity. Four interdisciplinary academic centers were founded during her presidency. She also oversaw a number of facilities improvements, including the construction of the F.W. Olin Science Center and Tansill Theater and the rebuilding of four Plex residence halls.



NORMAN FAINSTEIN, 2001-2006. During Norman Fainstein's presidency, the College strengthened its financial position and its system of shared governance. The Fortune Recital Hall was built and artificial turf was installed at David and Lyn Silfen Track & Field. In addition, the College began renovating two residence halls and created the Center for the Critical Study of Race and Ethnicity.



LEO I. HIGDON, JR., 2006-2013. Under Lee Higdon's leadership, the College earned national recognition for Fulbright Awards and Peace Corps volunteers, won the Sen. Paul Simon Award for Campus Internationalization, and was named to the President's Community Service Honor Roll. The College opened a new science center and fitness center and built the Zachs Hillel House. Additionally, Higdon implemented programs to foster faculty-student interaction, enhance faculty and student diversity, and strengthen the academic core of the institution.



KATHERINE BERGERON 2014-2023. Katherine Bergeron led the College through a global pandemic and oversaw one of the most significant periods of transformation in the College's history. During her tenure, \$100 million in capital investments helped to transform the campus landscape. Bergeron promoted a distinctive new approach to the liberal arts and a philosophy of full participation, which raised the College's national and international reputation and broke records in academic honors, athletics, applications, enrollment and fundraising.



2024-2025 Board of Trustees

Seth W. Alvord '93, *Chair*
Maria Wyckoff Boyce '85, *Vice Chair*
Peter D. Skaperdas P'17, *Vice Chair*
Dwayne C. Stallings '99, *Vice Chair*
Jessica L. Archibald '95
Betty Brown Bibbins '73
Isaac H. Clothier V '79 P'10
Loulie Sutro Crawford '89
Lawrence B. Damon III '93
Mark D. Fallon '92 P'28
Marisa G. Fariña '93
Hannah E. Gonzalez '23, *Young Alumni Trustee*
Kim-An Hernandez '99 P'28
Samirah Jaigirdar '22, *Young Alumni Trustee*

Jonathan A. Krane '90
John D. Linehan P'18 '23 '24
Erica L. Lovett '14
Sarah A. Mudho '98
Devon Danz Preston '93 P'28
Leslie Rosen '02
Jonathan S. Stavín '85
Susan Ekberg Stiritz '65
Diane E. Stratton '91
Maarten D. Terry '83
Anne A. Verplanck '80
Rajneesh Vig '93
Shawnia A. Yon '24, *Young Alumni Trustee*
John S. Zeiler '74

Emeriti Trustees

Debo P. Adegbile '91
Laura J. Allen '81
Judith Ammerman Brielmaier '60
David W. Barber '88
Ford W. Bell P'02
James S. Berrien '74
Francine J. Bovich '73
Bradford T. Brown P'12 '15
Christy Burke '93
Eduardo Castell '87
Theodore S. Chapin '72 P'07
Jonathan Cohen '87
Kevon Copeland '76
Jamie Glanton Costello '89
Duncan N. Dayton '81
Raymond J. Debbane P'09 '13
Anita L. DeFrantz '74
T. Wilson Eglin, Jr. '86
Warren T. Erickson '74
Sarah H. Fenton '63
DeFred G. Folts III '82
Marna Wagner Fullerton '56 P'91
Jane Funkhouser '53 P'85 GP'15
Carlos A. Garcia '88
Constance Smith Gemmer '80 P'10

Prescott W. Hafner '80
Carolyn R. Holleran '60 GP'07
Mark Iger '75
Ann Werner Johnson '68
W. Estella Johnson '75
Kenneth R. Kabel '76 P'12
Eric J. Kaplan '85
David B. Kelso P'09
Andrew Ketterer '71
Barbara Shattuck Kohn '72
Rae Downes Koshetz '67
Martha Joynt Kumar '63
Gerald D. Laubach P'79
Linda J. Lear '62
Susan Eckert Lynch '62
Jonathan D. McBride '92
Britta Schein McNemar '67
Lynda Batter Munro '76 P'08
Nancy S. Newcomb '67
John F. Niblack P'98
Laurie Norton Moffatt '78
Judith Tindal Opatrny '72
David H. Palten '76 P'04 '09
Maria C. Pellegrini '69
Evan M. Piekara '07

Mary Lake Polan '65 P'02 '10
Sharis A. Pozen '86
Carol J. Ramsey '74
Douglas C. Renfield-Miller '75
George S. Rogers '82 P'16
Theodore M. Romanow '76
Thomas A. Sargent '82 P'17
Annie Scott '84
Lyn Gordon Silfen '67
Ellen C.L. Simmons '69 P'04
Frederick P. Stratton, Jr. P'91 '96 GP'25

W. Carter Sullivan '79 P'16
Sally Susman '84
Dhuanne S. Tansill '64
Jean C. Tempel '65
Franklin A. Tuitt '87
Kevin Wade '76
Virginia Eason Weinmann '51
Diane Buchanan Wilsey '65 P'91
Timothy E. Yarboro '75
Pamela D. Zilly '75

Student Government Association Executive Committee

Bella Castellanos Palacios '25, *President*
Ian Hopkins '25, *Vice President*
Emi Camero Cortez '25, *Parliamentarian*
Tenzin Choedak '27, *Chair of Residential Affairs*

Mimi Noe '27, *Chair of Communications*
Melanie Rollins '25, *Chair of Academic Affairs*
Ali Rubin '25, *Chair of Honor Council*
Grace Webb '27, *Chair of Sustainability*

Staff Council Executive Committee

Lynne Crider, *Chair*
Merrill Collins, *Vice Chair*

Beth Blaisdell, *Secretary*
CC Curtiss, *Past Chair*

Alumni Association Board of Directors

Isaac H. Clothier V '79 P'10, *President*
Harris Rosenheim '09, *Vice President*
Veronica Venture '86, *Vice President*
Jennifer Lapan Mann '94, *Secretary*
Thomas Anderson '07
Angela Bannerman Ankoma '97 P'27
Taylor Austin '24
Laila Bera '23
Michael Boswell '10
Philip Dolan '99
Daniel Garcia '02
Susan Mabrey Gaud '68 P'07
Susan Peck Hinkel '65
M. Grant Hogan '07
Deion Jordan '17
Julia Kaback '18
Betty Fluegelman Kahn '68 P'92

Mario Laurenzi '90
Rasheed Mitchell '13
Erin Holstein Mogel '09
Samantha Capen Muldoon '88
Derrick Newton '18
Jacob Nozaki '22
Steve Owen '80 P'12
Allan Rogers '14
Katrina Sanders '92
Tamsen Bales Sharpless '89
An-Ming Sze Truxes '71
Aidyn Urena '10
Richard Vancil '82
Denise Wheeless '80
Mariko Wilcox '99
Yoldas Yildiz '18

Inauguration Committee

CO-CHAIRS

Victoria McKenna, *Director of Advancement and Presidential Events*

Lauren Middleton, *Secretary of the College*

Seth W. Alvord '93, *Chair of the Board of Trustees*

Bella Castellanos Palacios '25, *President of the Student Government Association*

Isaac H. Clothier V '79 P'10, *Trustee and President of the Alumni Association Board of Directors*

Merrill Collins, *Director of Auxiliary Operations*

Lynne Crider, *Chair of Staff Council and Associate Director of Annual Giving*

CC Curtiss, *Director of Wellbeing and Health Promotion*

Abdou-Latifou Dare '27, *Student Representative*

Marc R. Forster, *College Marshal and Henry B. Plant Professor of History*

Sydney Lamb '21, *Former Trustee*

Mary Kate O'Brien, *Director of Advancement Communications*

Robert Richter '82, *Director of Arts Programming*

Rosemarie Roberts, *Dayton Professor of Dance*

Dwayne C. Stallings '99, *Vice Chair of the Board of Trustees*

Presidential Search Committee

CO-CHAIRS

Debo P. Adegbile '91, *Former Chair of the Board of Trustees*

Maria Wyckoff Boyce '85, *Vice Chair of the Board of Trustees*

Seth W. Alvord '93, *Chair of the Board of Trustees*

Jessica L. Archibald '95, *Trustee*

Taylor Austin '24, *Student Representative*

Anne Bernhard, *Katharine Blunt Professor of Biology*

Sarah Cardwell, *Senior Associate Dean of Student Life*

Isaac H. Clothier V '79 P'10, *Trustee and President of the Alumni Association Board of Directors*

Marisa G. Fariña '93, *Trustee*

Persephone Hall, *Hale Family Executive Director of the Hale Center for Career Development*

Maged Hassan '25, *Student Representative*

Suzuko Knott, *Associate Professor of German and Director of the Toor Cummings Center for International Studies and the Liberal Arts*

Andrea D. Lanoux, *Elizabeth S. Kruidenier '48 Professor of Slavic Studies*

Ariella R. Rotramel, *Chair of the Faculty Steering and Conference Committee and Vandana Shiva Associate Professor of Gender, Sexuality and Intersectionality Studies*

Dwayne C. Stallings '99, *Vice Chair of the Board of Trustees*

Presidential Transition Committee

Maria Wyckoff Boyce '85, *Vice Chair of the Board of Trustees*
Bella Castellanos Palacios '25, *President of the Student Government Association*
CC Curtiss, *Director of Wellbeing and Health Promotion*
R. Danielle Egan, *Dean of the Faculty and Fuller-Maathai Professor of Gender, Sexuality and Intersectionality Studies*
Samirah Jaigirdar '22, *Young Alumni Trustee*
Chad Jones, *Associate Professor of Botany and Environmental Studies*
Cade McAdams '25, *Student Representative*
Aaron McKissack '26, *Student Representative*
Sarah A. Mudho '98, *Trustee*
Erika J. Smith, *Dean of the College and Vice President for Retention and Success*
Sufia Uddin, *Professor of Anthropology and Religion*
Mo White, *Director of Athletics*
John S. Zeiler '74, *Trustee*

Delegates

1636	Harvard University	Marc R. Forster
1701	Yale University	Ellen Cohn
1740	University of Pennsylvania	Eric J. Kaplan
1743	American Philosophical Society	Indra Nooyi
1749	Washington and Lee University	Tammi Simpson
1793	Hamilton College	Liz Fox Keogh
1793	Williams College	Tom Van Winkle
1794	Bowdoin College	Frank Taylor
1795	Union College	Donald Foley
1813	Colby College	Nancy Donahue
1815	Allegheny College	Arthur Nagel
1817	University of Michigan	Andrew Margie
1823	Trinity College	Rebecca Pappas
1831	Wesleyan University	Thomas Halsey
1834	Wake Forest University	Nick Oldenburg
1837	Mount Holyoke College	Ruth Grahn
1841	Fordham University	Robert Gallé
1842	Villanova University	Christine Kraninger
1843	College of the Holy Cross	Emily Petersell
1846	Grinnell College	Casey Malcolm
1852	Tufts University	Virginia Anderson
1853	Cornell College	Stephanie Haskins
1854	Wofford College	Roberta Hurley
1855	Bates College	Benedict Flynn
1856	Albright College	John Bailly
1856	University of Maryland	Ann Wylie
1857	Sewanee: The University of the South	Christopher Hammond
1865	Lehigh University	Erika J. Smith

Delegates *(continued)*

1871	Smith College	Abigail Van Slyck
1873	Massachusetts College of Art and Design	Jamie Glanton Costello
1876	Juniata College	Diane Snider
1876	Juniata College	Jeffrey Snider
1876	United States Coast Guard Academy	Michael Johnston
1883	Modern Language Association	Matteo Pace
1884	American Historical Association	Marc R. Forster
1884	Temple University	Debbie Lefkowitz
1884	Temple University	Stanley Lefkowitz
1885	Bryn Mawr College	Tracey Ohaus
1885	Stanford University	Allyson Stollenwerck
1893	Hood College	Nancy Gillece
1896	American Guild of Organists	Michael Noonan
1919	Emmanuel College	Carley Henderson
1920	University of New Haven	Greg Eichhorn
1924	Nazareth University	Elizabeth Paul
1928	Elms College	Regina Hitchery
1932	University of Saint Joseph	Rhona Free
1938	Mitchell College	Tracy Espy
1942	Fairfield University	John Jahne
1957	University of Hartford	Lawrence Ward

Connecticut College Singers

DIRECTOR

Shou Ping Liu, *Assistant Professor of Music*

Alison Bernard '28	Genevieve Frable '28	Jilly Pearson '25
Ella Brady '28	Ellie Frisbie '27	Dani Rutherford '28
Shannon Brock '28	Quinn Grant '28	Elaine Sandoval Carrasco '28
Anna Carino '28	Thayer Green '28	Kaylee Sanford '28
Maddie Caulfield '28	Jonah Hane '26	Eleanor Sheridan '27
Katherine Caviness '25	Ari Kaplan Benjamin '25	Olivia Siegel '27
Kaiden Dalby '28	Maya Katsoyich '28	Clara Smith '28
Anna Dalton-Kay '28	Samantha Lamontagne '25	Jessica Solit '28
Julio Davis '28	Noah Levinson '28	Samantha Spiegel '27
Max Davis '28	Anahí Lopez Patiño '25	Megan Spindler '25
Tyler Davis '26	Sarah Ludwigson '27	Charlotte Steinhauer '27
Lucy DeRosa '27	Gretchen Magill '27	Eloise Strabley '27
Sophia Ethington '26	Rhea Mallery '27	Savannah Venegas '28
Ruslan Feyzov '28	Lauren McCoy '27	Alexa Warren '26
Vlad Filatov '26	Paige Nitti '28	

Constitution Brass Quintet

Ken Bell, <i>trumpet</i>	Julia Cavagnaro, <i>horn</i>	Walter Gibson, <i>tuba</i>
Nancy Brown, <i>trumpet</i>	Walter Lasley, <i>trombone</i>	

Inaugural Poem

The Promise of Growth

Let the thaw warm the sprouts, defiant against the blister of winter.

The frost's warmth sheltered the seeds
nourishing the patient blossoms of hope.

When Spring unbraids her hair and the dark recedes
Her familiar sunbeams nurture the past, the present, the future.

Let the delight of blooming together
dance within the beauty of growing
as we take root and reach, with the new dawn glowing.

— Julia Pelczarski '28



Continuing Inauguration Activities

SPRING CHORAL AND ORCHESTRA CONCERT: TOTALLY '80S TALENT SHOW

6 p.m., Saturday, April 26, in Evans Hall, Cummings Arts Center

Enjoy a blast from the past as our talented students show off their singing and dancing skills.

Audience members will also have the chance to vote for their favorite performance.

WALK TO END HOMELESSNESS

1 p.m., Sunday, April 27, at Parade Plaza in downtown New London

Join us for the 18th annual Walk to End Homelessness, a student-led initiative organized by Connecticut College's Holleran Center for Community Action and the New London Homeless Hospitality Center. This year's walk is sponsored by the Inauguration Committee in honor of President Chapdelaine, reflecting the College's dedication to local partnerships and addressing critical needs.

POCA FASHION SHOW

7 p.m., Sunday, April 27, in the 1962 Room, College Center at Crozier-Williams

Sonder: Everything Matters is more than a fashion show—it's a celebration of identity, culture and self-expression. Inspired by the energy of a Conn BIPOC dorm party, this immersive experience invites all to witness the creativity, style and stories of Conn's BIPOC students.

Donations will be accepted at the door.

(RE)DEFINING A LIBERAL ARTS EDUCATION: CONN'S PRESIDENTS ADAPT TO THE TIMES

April 5-August 29, Charles E. Shain Library

At its founding, the mission of Connecticut College was based around three ideals: to provide a quality liberal arts education to women who did not have access to higher education, to foster community by situating that education in a residential setting and to structure that education to prepare students to make a difference in the world. This exhibition explores how Conn's presidents have worked to fulfill the College's mission.

STUDENT WORK SHOWCASE

April 18-August 29, Charles E. Shain Library

Explore a range of student work with this multimedia display, including reproductions of All-College Symposium posters, artwork, video clips of student performances and a slideshow of student life.

Join Connecticut College (@ConnCollege) students, faculty, staff and alumni as we celebrate the Inauguration of President Andrea E. Chapdelaine on social media.

Share your photos and videos with the Conn community by tagging @ConnCollege on Instagram.

